

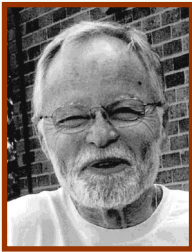


... in the heart of beautiful Downtown Lima



December 2021

## David Adams ... everywhere

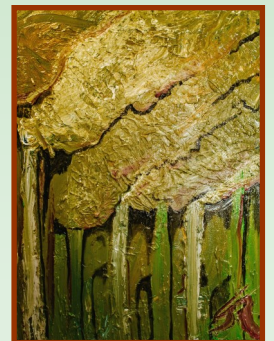


Come celebrate the many works of cartoonist, professor, artist, philosopher, poet, (and more), David Adams. ArtSpace is honored to have the largest collection of his works in one place for you to discover where all of his work has been. Take some time to see his social justice work in woodcuts, award winning publications, bound journals, and the whimsical caricatures in the Ellen Nelson and Sullivan Galleries. Visit the Reading Corner, where you can sit and browse through his collection of colorful illustrations. It is truly a journey of history, learning, and fun. If you know David, he usually has a small black composition book in his shirt pocket, and will be recording the people and situations he sees, daily. The collection of those books, over 100, are in the foyer area on the second floor. Don't



miss seeing this progression of his work—and life. If you are inspired by his practice, ArtSpace has small blank composition books for sale in the gift shop. You can start your own collection with our help! We also have a large variety of David Adams posters, postcards, and notecards in the gift shop. It's a lovely way to carry a little of his legacy with you. ArtSpace will be open Tuesday through Saturday, 10:00 to 5:00 pm through December 31st.

Make sure to see the Scott Rose exhibition, **“UNREFINED”** in our Third Floor Gallery.



# It's Membership Drive Month

December is our new and renewal month for membership to ArtSpace/Lima. Our self-addressed-stamped envelopes with the details for the coming year have been mailed. We cannot thank you enough for supporting this organization with your membership and advocacy for the arts.

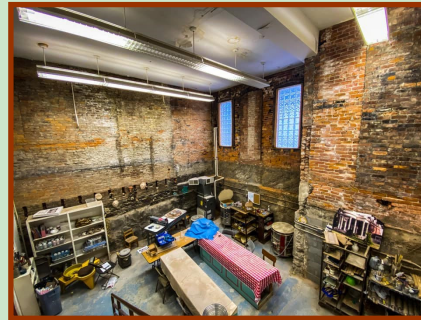
What does membership to ArtSpace do?

For you, it's advanced notice on all of our acclaimed exhibitions and events. It's also access to ArtSpace studios anytime we are open. Want to create something special? Use our EBG (Everything But Glitter) Room where all materials are there for your use. You can also use the library for borrowing books or having a group of 10 in for a meeting. The clay lab studio is also for your use. Where else can you throw pots, build structures, and make gifts with clay? You also get a 10% discount on all purchases in our Gift Shop. And our memberships? Still the lowest you'll find anywhere for the services you get. We've kept them low to encourage artists to use this art center.

For us, the membership give us the support and ability to bring you more of what you've told us you like. We've given out 28,000 TO-GO Art Bags, presented art activities at the Street Fair, Activate Allen County Block Party, CASA Superhero Run, Summer Reading in the Parks, Art in the Parks, just to name a few. We've also presented top artists and exhibits in our expanded gallery space in the building.

YOU help enrich the community with creativity with your membership. As partners for the arts, our community benefits.

We thank you very much!



## Make supporting a convenience with **Auto-Pay!**

Please consider supporting ArtSpace with the convenient Auto Pay. Give us a call, and we will set it up for you so you can easily have memberships, donations, and/or sponsorships deducted monthly from your account. It's that easy! Your payment will be spread over several months. You can also help ArtSpace by becoming a donor and designate the program(s) you would like the funds to cover. All transactions are safe and very convenient. Please consider using this service.

Call us today! 419-222-1721 or email us with any questions - [sally.artspace@gmail.com](mailto:sally.artspace@gmail.com)



### Yearly Memberships and Donation Levels

Student/Senior	\$25.00
Adult	\$40.00
Family	\$65.00

Bronze Donor	\$100.00
Silver Donor	\$200.00
Gold Donor	\$500.00
Platinum Donor	\$1000.00

Corporate Sponsor - \$2500.00



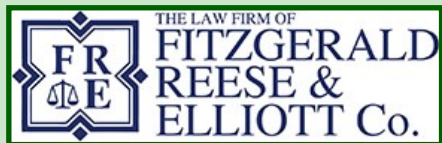


## Help 'LIFT' us up ...

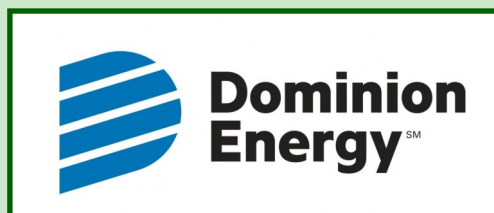
We are very pleased to announce that Procter and Gamble has generously awarded ArtSpace/Lima \$10,000.00 through the The P&G Fund of the Greater Cincinnati Foundation. The monies will be used to make the clay lab handicapped accessible by installing a wheelchair lift. Working with clay has been one of the most popular classes we have, and the lab at ArtSpace rivals some small-colleges. We have 8 clay wheels, a slab roller, three kilns, and the best glazes and equipment. Many people have helped to make this space fully functionable, and now we can offer the area to all, and this is where you may help. The cost of a wheelchair lift is \$26,446.00, with \$3500.00 for construction and electrical work to install. We are in the process of raising \$20,000.00 to add to the P&G award to finish the project. We are asking if you would consider donating toward this fund so that all areas of ArtSpace will be open to everyone, regardless of any mobility issues. (You may also donate your time if you are an electrician or have experience in construction). As always, we will supply you with the appropriate donation forms, and you can know that this community has been enriched with creativity because of your donation and support. To sweeten the deal, we are offering anyone donating \$1000.00 or more, a group event in the clay lab, complete with hors d'oeuvres and beverages in our gallery. It's a fun experience and great way to experience the power of art. If you have questions about this project, please call us at 419-222-1721. We thank you so very much!



*Many thanks to our Sponsors - Your support is integral to our success!*



The P&G Fund of the Greater Cincinnati





65 Town Square  
Lima, OH 45801  
419-222-1721  
artspacelima@woh.rr.com  
www.artspacelima.com

Non-Profit Org.  
U.S. POSTAGE  
**PAID**  
Lima, Ohio  
Permit No. 126  
45801



ArtSpace/Lima is supported in part  
by grants from Arts Midwest and  
the Ohio Arts Council.



## The 2022 ArtSpace Photography Show January 9 through February 5, 2022

*Opening reception for artists will be from 2:00 to 4:00 pm on January 9th  
Awards ceremony 3:00 pm*

ArtSpace/Lima - 65 Town Square

## Upcoming Exhibitions and Openings

*Save the dates ...*



34th Annual

Kewpee High School Invitational Exhibition

February 11 through 26, 2022

*Opening Reception and Awards - February 11- 7:00 pm*

Generously underwritten by Mr. Shutt and  
Kewpee Restaurants

70th Annual

## Spring Show

March 20 through April 30, 2022

*Opening Reception and Awards - March 20 - 3:00 pm*

Intake Days—March 8 - 12

