



'Forget Me Not'

September 21 - November 2, 2019

Gallery Guide

“Forget Me Not” is an exhibit highlighting three artist’s work as caregivers, as they use their art to document their relationship with a loved one’s decline due to a diagnosis of dementia and/or Alzheimer’s. Our mission is to present high quality exhibits to the citizens of West Central and Northwest Ohio, and we feel this exhibit is one of the best in our gallery. Our job is to promote artistic expression in relation to experience and narrative, and this current topic touches so many in the caregiving world and gives them an outlet for expression. This exhibit also fosters dialogue between artists and audiences across race, gender, geographic, and socio-economic boundaries, due to the nature of the disease and care. Art and its emotional impact can reinforce the vital bond between individuals and connects all cultures.

The exhibit includes personal reflections from local residents. Nursing homes with Memory Units have been asked to have caregivers write personal stories or give accounts about their loved ones on long, colorful, papers. These first-hand narratives are featured as part of the exhibit. We invite you to share your thoughts on the provided papers, too.

This exhibit is for everyone -- those who have been through the all-encompassing journey of being a caregiver, and for those who can empathize. In some form or manner, the slow travel away of a life we’ve known touches us all. Our goal is to show how artists communicate the idea of caring, communication, honoring, and healing, through the process of walking with a loved one to the end.

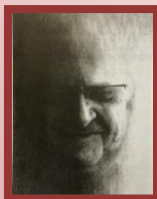


Artists Featured In The Galleries:



Tony Luciani is an artist and photographer who decided to move back with his 95 year old mother. His black and white images are enlarged to 6'x6' size in the gallery with his words and description of each photo. Tony talks about their relationship and how it changed through the photos, and also describes them in a TED talk, which is shown on a continuous loop in one part of the gallery.

<https://www.youtube.com/watch?v=HSfMx6Mr1eE&t=12s>



Michelle Walker is a professor of art at Capital University and is currently drawing her father, Henry, in vine charcoal drawings. She has captured his image month by month during the 'aging process' of Alzheimer's. It has not only changed the father, but changed the family dynamic.

Anita Lehman is an artist from Bluffton and has a series of colorful, acrylic paintings showing what happened, visually, through abstract shapes, to her brother-in-law and his family as he was diagnosed in his mid-50's with Alzheimer's. A physician and musician, the family was drastically changed and uprooted through this 10 year process, captured through her patterned and rhythmic paintings.



A special thank you goes to Amanda Rose, Cheap Sign Company, Tony & Carolyn Mitchell, and Maia Fisher, for capturing the vision and going above and beyond to make this exhibit happen.