

June 12 - July 23

Judith Greavu: A Retrospective

Judith Greavu has a long history with ArtSpace/Lima. She has been juried into almost all Spring Shows since 1964. She has also curated exhibits for ArtSpace. She served on the ArtSpace Board of Trustees and on the Exhibit Committee. And she has taught and lectured for us. But when *Judith Greavu: A Retrospective* opens on June 12, it will be the first time ArtSpace has mounted a comprehensive showing of her work.

Greavu holds an M.F.A. in Painting from Bowling Green State University. She has taught at Bluffton University and recently retired from Ohio Northern University, where she was Associate Professor in the Department of Art from 1985-2005.

Greavu's work is unique and instantly recognizable: with its roots in the visual fluidities and intuitive symbolism of the natural world, it presents us with shapes, forms, "animals," and creatures, who, if they do not exist, might even now be evolving. She has worked in all media, but it is her bronze sculptures which signify her most passionate response to the watery world she perceives. These, like *Guardian Egg* (opposite) or *En Garde!* which won the First Award in Spring Show 2010, are often large, highly tactile, even (it is an illusion, but one which Greavu cultivates) mobile beings, among us but obviously not of us.

All of the pieces in the exhibit, Greavu writes, "are based on drawing investigations of personally and directly experienced natural objects, events or phenomena." She adds that, however surreal they may appear, "I have been assured by a water biologist friend that he has seen many of my fanciful forms under his microscope."

Greavu's works have been shown in numerous venues around the country: she has presented from Michigan to Florida and

Cont. on p. 3



Guardian Egg
Bronze 1988

Collection of Ginny and Rick Laiho

July 18-22

Kids' Summer Art Camp

Kids. Summer. Art. Camp. What an inevitable combination. For the week of July 18-25, ArtSpace will bring those four elements together in what is sure to be a memorable experience.

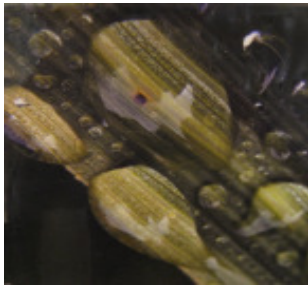
Each day, students will immerse themselves in art techniques. Five hours a day (with an hour tucked in for a brown-bag lunch), four classes from the most experienced art teachers on our roster.

Here's what the day will look like: Begin at 10:00 am with a session in Ceramics taught by Anna Fisher. Anna is a longtime instructor in our education program. Her

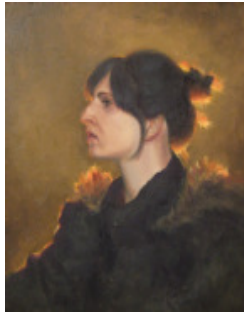
Cont. on p. 3



Spring Show 2011: The Award Winners



Best Of Show
Ashleigh Carrigan
Natural Observation Series (detail)
Mixed media



Award for Painting
Ruth Ann Sturgill
Illuminations
Oil on canvas



First Award
Jaye Bumbaugh
Beetle Collection
Acrylic on canvas



Award for Ceramics
Kaname Takada
Masu-Series-21026
Earthenware

Jurors' Statements

It is a privilege and honor to serve as one of two jurors for this year's ArtSpace/Lima Spring Show. I take very seriously the responsibility that comes with the task.

It is never easy selecting which work to include. When I jury a show, my selections are based on a comparative high level of skill, craft and an understanding of the medium. In addition, one must take into consideration the conceptual elements, the idea behind the piece, the uniqueness of the idea and how that subject matter is approached and dealt with.

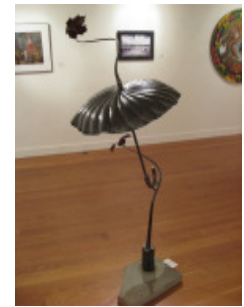
Congratulations to all who were included. To those who were not...I'm afraid rejection is part of the game. I for one could paper my living room with all the letters of rejection I have received over the last forty years as an exhibiting artist.

Thanks to Bill Sullivan for the opportunity and thanks to ArtSpace/Lima for its enthusiastic support of the visual artists of northwest Ohio.

Ed Valentine
The Ohio State University at Lima



**ArtSpace/Lima
Photography Club Award**
Phil Hugo
Mammoth Hot Springs
Photography



Martha Farmer Sculpture Award
Michael Bendele
Going Sideways
Forged steel and stone



Third Award
Mike Kozumplik
The Swaying Beeches Bear the Eleven Stars
Sterling silver, bronze & pearls

It was a pleasure to serve as a Juror for the ArtSpace/Lima 2011 Spring Show. It proved to be an extraordinary experience viewing the work of so many creative individuals from Northwest Ohio.

I want to thank all of the artists who submitted their work for jurying. The call was open to any artist living within 100 miles of Lima working within one or more of the disciplines of painting, drawing, printmaking, photography, ceramics, sculpture, textiles, digital art, or mixed media. The response to the call was equally diverse, visually and thematically. There were an almost equal number of representational, abstract and non-representational artworks, which speaks of a broad understanding of numerous traditions associated with making art. I believe the works included in the exhibition will reflect two of the criteria I used in evaluating the work. Display of technical proficiency and an original aesthetic sensibility.

I would like to offer congratulations to everyone who has work in the exhibition. Congratulations to the award winners for providing ArtSpace/Lima with some particularly compelling works to exhibit. Thank you.

Brad Olson
The Ohio State University at Lima



Second Award
Alisa Rowland
Dale
Silver gelatin print

August 2 - September 10

ARTSPACE POPS

Summertime, and those of us in the arts game think lighter thoughts. Thus, the Boston Pops, the Ravinia Festival, Cincinnati Pops at Riverbend. And now, ArtSpace/Pops, two, juried, three-week exhibits of the best in fine crafts in Ohio and surrounding states.

The Ellen Nelson Gallery will be home to two separate sessions of ArtSpace/Pops, the first from August 2 through August 20, the second from August 23 through September 10. Exhibitor/vendors have been invited to set up shop, twelve to fifteen at a time, in the gallery. Open houses will be held on Wednesdays during the shows: on August 3, August 10, August 24, and August 31, from 5:30 to 8:30 PM. Exhibitors have been invited to attend any or all of the open houses to discuss their work.

Jurors for ArtSpace/Pops will be Gregg Luginbuhl, past president of Ohio Designer Craftsman, and Mike Kozumplik, jeweler, Sherwood, Ohio, who has been a frequent exhibitor at ArtSpace.

For more information on ArtSpace/Pops and to download a printable prospectus in pdf format, please see the ArtSpace website at www.artspacelima.com/ArtSpace Pops 2011 or call ArtSpace/Lima at 419-222-1721.



Kids' Summer Art Camp

Cont. from p. 1

knack of introducing students to the secrets of ceramic construction is one of the program's real strengths. Then, it's on to Printmaking under the knowledgeable eye of Ken Ogle. From the 3D experience into 2D as students make their templates and see them come to life on paper. A short break for a brown-bag lunch. BYOB, as it were.

After lunch, students will be introduced to the world of Cartooning with Lima cartooning legend David Adams. They will finish up under the care of Anna Fisher, another of our outstanding regular faculty members, as they try their hands at Mixed Media Drawing.

Kids' Summer Art Camp at ArtSpace is appropriate for ages 8-15. Spaces are limited, so we recommend early enrollment. Enrollment deadline is July 12. Call ArtSpace at 419-222-1721 to enroll. Or visit the website www.artspacelima.com/Summer Art Camp where you'll find a printable enrollment form.

Kids' Summer Art Camp is underwritten by the generous sponsorship of P & G Manufacturing of Lima.

June 12 - July 23

Judith Greavu: A Retrospective

Cont. from p. 1

throughout Ohio, she constructed a fountain for the city of Bluffton, and her *Reef Installation* was one of the works in the prestigious citywide Grand Rapids ArtPrize exhibition in 2010.

A major catalogue to accompany the exhibit has been created by Mary Ann Sullivan. It includes a large number of color and black and white plates, a full list of works exhibited, Greavu's resume, her Artist's Statement, and an analytic/appreciative essay by Jeanette Wenig Drake, Assistant Professor of Communication, University of Findlay. The catalogue was generously underwritten by Ohio Northern University.

Judith Greavu: A Retrospective runs from June 12 through July 23. An opening reception for the artist will be held at ArtSpace on Sunday, June 12, from 2:00 to 4:00 pm. For more information on the Judith Greavu exhibit, please see the ArtSpace website at www.artspacelima.com



65-67 Town Square
Lima, OH 45801
419-222-1721
artspacelima@woh.rr.com
www.artspacelima.com

Non-Profit Org.
U.S. POSTAGE
PAID
Lima, Ohio
Permit No. 126
45801



*ArtSpace/Lima is supported
in part by a grant from the
Ohio Arts Council.*

June 2011 -- 4

Last Words from the Operations Manager

On Our (Lost?) Communal Sense



Two ideas keep colliding in my head, resulting in a true verbal mash-up, if there ever was one.

The first is this: in some parts of the world, a public space is a mutual responsibility. It belongs to everybody; therefore everybody has a stake in it; therefore everybody takes ownership. Whether it's tidying up and maintenance, or governing the use, or enjoying the perk, it's everybody's space. In our country, by contrast, a public space belongs to nobody, therefore nobody needs to take the responsibility for it. Let somebody else do it. (Worst case, let's trash it. But that's another story.)

The second is this: membership in ArtSpace/Lima is not anything like what it should be, a trend that we keep trying to buck. But Roger Ebert, writing in *The Daily Beast* (05/16/2011), suggests that it may be a losing battle. He's writing about the changes in how we watch movies, but there's a larger theme: "The communal experience of moviegoing [is] threatened. The erosion of community continues. Robert D. Putnam's seminal 2000 book, *Bowling Alone*, suggested Americans were losing their love of lodges, church groups, sewing circles, book clubs, film societies, veterans' halls, and so on. Who foresaw we might also someday be seeing new movies alone?" Ebert/Putnam could have added "membership in arts associations" to the list of things we're losing interest in. It's not much of a stretch.

So far, so good: ArtSpace is not, of course, an official public space in the same way that Town Square or Teddy Bear Park is a public space, but the sign on our door reads: "ArtSpace is always free and open to the public." In some non-official ways, ArtSpace is very much a public space, even a public trust. Not to put too fine a point on it, it is therefore everybody's "Space". Or so it would seem. But if we as Americans have never had a sense of community ownership, and if we have also lost interest in the communal experience, then what are the chances that we are going to maintain it as a line item in our checkbooks?

So, what say you? Does membership in ArtSpace have the quaint status of a buggy-whip manufactory in an age of speed? Or is it still a viable priority in your life? Do you shrug and let somebody else support what has been called a "local treasure"? Or do you stand and be counted? (And, not incidentally, contribute to keeping the doors open and the lights on.)

Of course, there are ways other than membership to support ArtSpace: you might volunteer an hour or two of your time to tending. Or how about spreading the word by "liking" our postings to *Facebook*? Whatever method you opt for, I hope you can squeeze ArtSpace onto your list of things that matter to you. And I hope you'll find a way to (continue to) support us as we work to bring the best of the art world to northwest Ohio.

Best,
Bill Sullivan